

A large, jagged iceberg floats in the ocean. The ice is white and textured, with sharp edges and a prominent crack. The water is a deep blue. The text "MELTING OF GLACIERS" is overlaid in a white, serif font, centered on the image.

MELTING OF  
GLACIERS

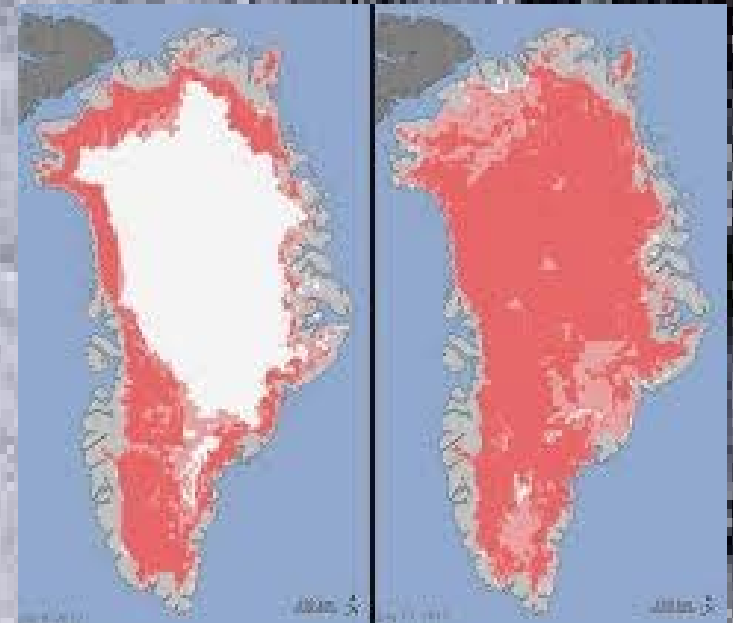
# **Definition of glacier**

- **A glacier is a large persistent body of ice ( formed by accumulation of snow) that moves to stresses to introduced by its wheight.**
- **Glaciers are the biggest amount of fresh water in the world.**



# Causes

- **The melting of the glaciers is caused by the elevation of the Earth's temperature (global warming)**



# Consequences

- **Losses of natural habitats**
- **Losses of resources of fresh water**

